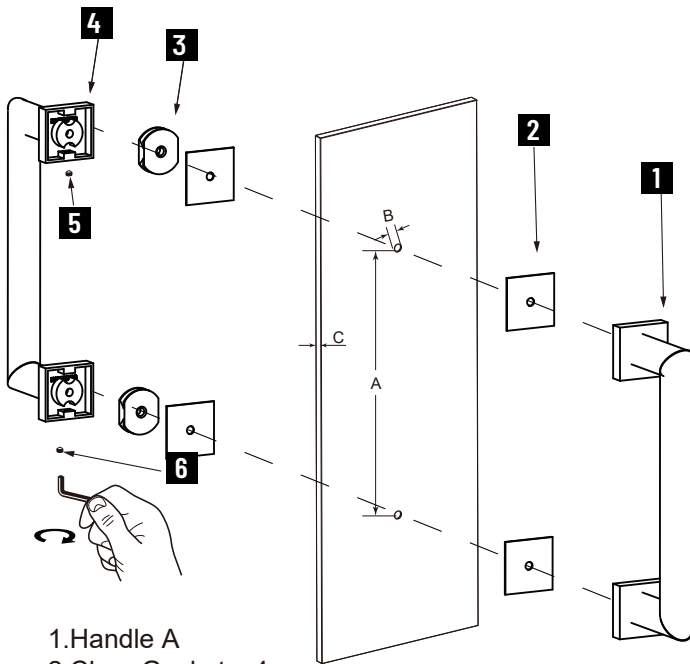


MADRID COLLECTION

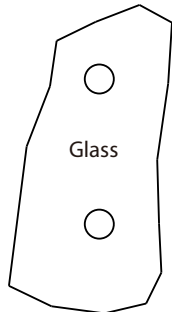
DOUBLE SHOWER DOOR HANDLE

2627806/7808/7812/7818/7824

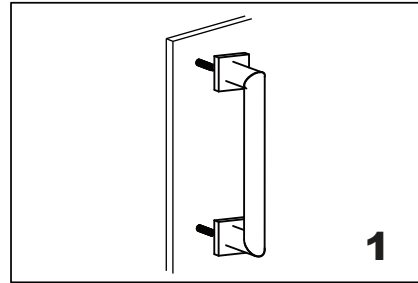


- 1.Handle A
- 2.Clear Gasket x 4
- 3.Fixing Bracket x 2
- 4.Handle B
- 5.Set Screw M5 x 2
- 6.Allen Key 2.5mm x 1

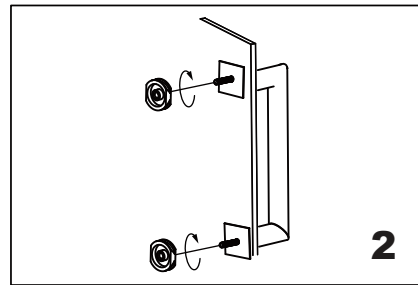
GLASS INFO



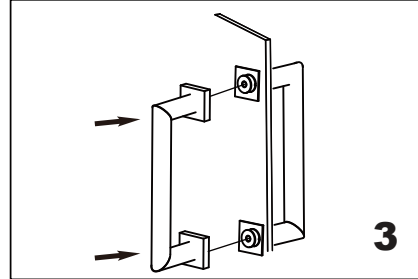
| Glass Hole C-C Distance | | |
|-------------------------|------------|------------------------|
| A | 6"/152mm | 6" Shower Door Handle |
| | 8"/203mm | 8" Shower Door Handle |
| | 12"/305mm | 12" Shower Door Handle |
| | 18"/457mm | 18" Shower Door Handle |
| | 24"/610mm | 24" Shower Door Handle |
| B | 1/2"(12)mm | Glass Hole Diameter |
| C | 6-12mm | Glass Thickness |



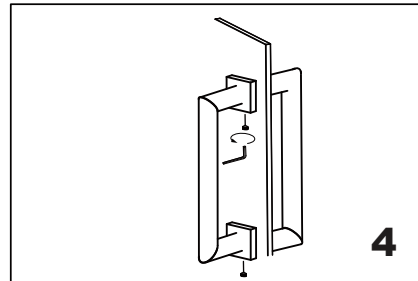
Install the handle A (bolt) through the glass holes, make sure the rubber gaskets are between handle & glass.



Screw in the fixing brackets into the handle bolts.



Add the handle B end caps on the fixing brackets, make sure the set screws holes in the bottom.



Fix the set screws on the end caps, tighten it to avoid loose from fixing brackets.