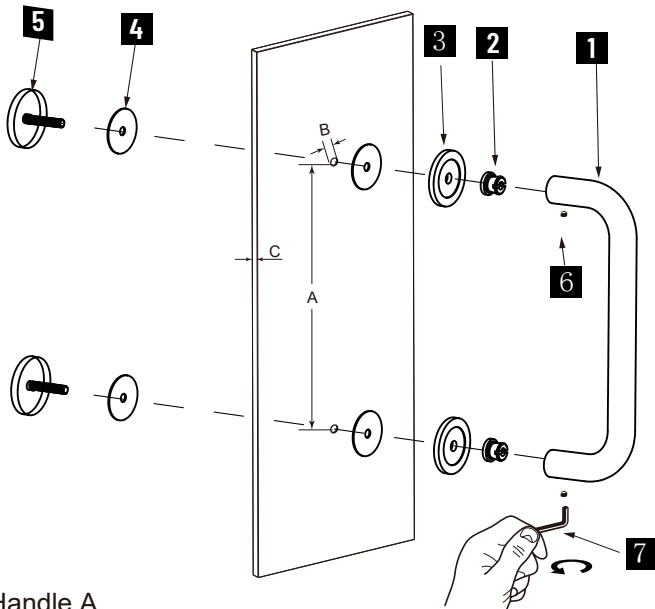


## NICE COLLECTION

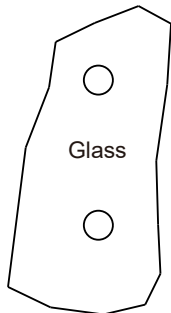
### SINGLE SHOWER DOOR HANDLE

1707506/7508/7512/7518/7524

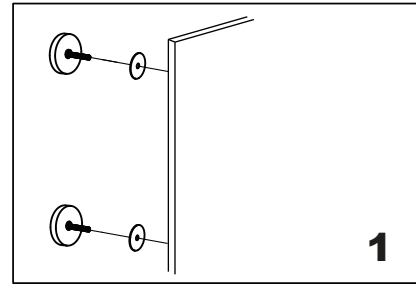


- 1.Handle A
- 2.Fixing Bracket x 2
- 3.Backing x 2
- 4.Clear Gasket x 4
- 5.End Cap
- 6.Set Screw M5 x 2
- 7.Allen Key 2.5mm x 1

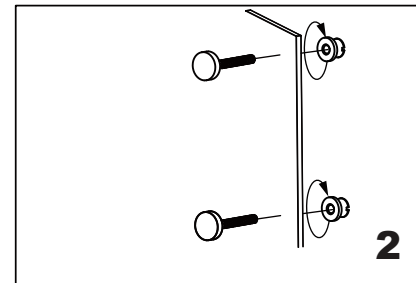
#### GLASS INFO



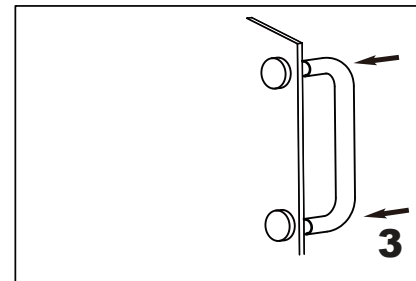
Glass Hole C-C Distance		
A	6"/152mm	6"Shower Door Handle
	8"/203mm	8"Shower Door Handle
	12"/305mm	12"Shower Door Handle
	18"/457mm	18"Shower Door Handle
	24"/610mm	24"Shower Door Handle
B	1/2"(12mm)	Glass Hole Diameter
C	6-12mm	Glass Thickness



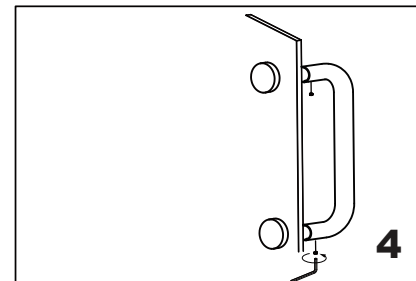
Install the end cap "5"(bolt) through the glass holes,make sure the rubber gaskets are between handle&glass.



Screw in the fixing brackets into the bolts.



Add the handle handle A onto the fixing brackets, make sure the set screws holes in the bottom.



Fix the set screws on the handle,tighten it to avoid loose from fixing brackets.